

# HS 90° series

**AUTOMATIC WELDING BAR MACHINE WITH PRODUCTS INFEEED  
CONVEYOR AT 90°.**

**IN-LINE PNEUMATIC PUSHER WITH MULTI LINE PRE-COUNT**



**ALL MODELS ARE SET UP TO BE INTEGRATED IN COMPLETE PRODUCTION  
LINES, WITH AUTOMATIC MANAGEMENT OF THE SIGNALS THAT ARE  
RECEIVED FROM THE MACHINES AT THE ENTRY AND EXIT OF THE LINES**

## Technical features

HS 90° Models	HS90°-1E	HS90°-2E	HS90°-1F	HS90°-2F
Bar (mm)	750	750	700	700
Max. Spool Width (mm)	730	730	680	680
Max. package width (mm)	The width of the package is proportional to its height.			
Max. package height (mm)	380	380	380	380
Divider dimensions				Min 175x250* Max 300x400
Tunnel entrance dimensions (mm)	600X400h			
Tunnel chamber length (mm)	1500			
Machine length (mm)	4250	4690	5000	5130
Machine width (mm)	2000	3000	3000	3000
Machine height (mm)	2100	2100	2100	2100
Work Surface Height	Standard 850 +/-25			
Machine weight (Kg)	1580	1850	2100	2380
Electrical Power Supply	200X3-T / 400x3+N+T			
Electrical Power (Kw)	24	28	28	28
Electrical Consumption (Kw/h)	12	14	14	14
Pneumatic power supply (bar)	6			
Air consumption per minute (NL)**	200	210	200	210
Max. production per minute	8-10	10-12	8-10	10-12

*The features indicated may be subject to change*

\* Customizable on request

\*\*Based on max. production

## Available models

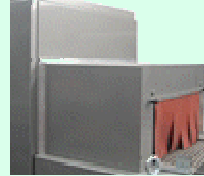
- . With film only with 1 or 2 entrance tracks  
HS 4 P90°1E / P90°2E / 1R (Up to 8/10 Packages / min.)
- . With film or film+cardboard divider  
HS 5 P90°1F / P90°2F (Up to 10/12 Packages / min.)

- AUTOMATIC MACHINES WITH PRODUCT FEED AT 90° WITH 1 OR 2 TRACKS, PUSHER UNIT WITH MULTI-ROW PRE-COUNTING.
- VERSION WITH ADDITIONAL UPPER ROTATING RODS FOR TRANSFER OF THE PRODUCT BEYOND THE WELDING BAR, WITH INSERTION OF THE CARDBOARD DIVIDER UNDER THE PRODUCT.
- SUITABLE FOR PACKAGING HEAVY, IRREGULAR PRODUCTS, INDIVIDUAL OR GROUPED, IN THE DESIRED FORMATS.
- SIDE MAGAZINE FOR CARDBOARD DIVIDERS
- POSSIBILITY TO PACK PRODUCTS WITH FILM ONLY OR WITH FILM PLUS CARBOARD FOLDER
- TOUCH SCREEN CONTROL PANEL

## Available optionals

---

**Additional 400 mm insulating capote** positioned at the tunnel exit.



**Too full photocell at tunnel exit** is recommended when the machine is inserted in an automatic production cycle. The system allows automatic management of product accumulation at the tunnel outlet without having packages blocked inside the tunnel.



**Pneumatic product pressing unit** for unstable packages, with adjustable height, holds the package in position before the welding bar descends



**Film presser roller unit** installed at the tunnel outlet compacts the excess film that remains on the sides of the package when total closure of the package is required



**Upper and lower film spool cutting unit** using just one spool in order to package small or medium sized products on 2-3 tracks for increased production and optimized use of the machine's potential.



**Electrical hoist unit** for lifting the upper film spool

**Upper and lower film unspooling units with entry at 90°**

**Product containment guides** positioned after the welding bar



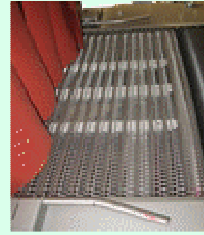
**Pneumatic lifting** of the film towing roller to facilitate spool change operations.



**Manual lifting** of the lower/upper spool joint in order to speed up changing.



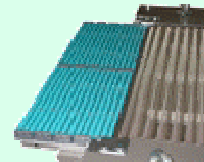
**Product protection lateral guides** positioned inside the tunnel.



**Machine mounted on wheels** so that it can be moved without the aid of lifting equipment



**Roller conveyor with thick rollers** positioned at the tunnel exit, under the package cooling unit. Especially useful for packaging groups of products using film only. These rollers facilitate the passage of the packages without causing any disintegration of them, resulting in a compact bundle once it is cooled.



**Automatic height adjustment of the welding bar.**

**Semiautomatic or automatic bundle ejection system** inside the tunnel chamber by means of appropriate devices.

**Polyester canvas rectilinear conveyer belts** arranged in various measurements controlled by motion variator for automatic product movement.

**Rectilinear idle roller conveyors** for gravitational transport and accumulation of products

**Motorized roller conveyors** with clutched rectilinear rollers, available in various measurements controlled by motion variator for automatic product movement.

**Motorized 90°-180° curves** with thermoplastic resin "flex" chain controlled by motion variator for automatic product movement.