

MS 70 L

**AUTOMATIC AND SEMI AUTOMATIC WELDING BAR MACHINE WITH
INFED CONVEYOR BELT**



**ALL MODELS ARE SET UP TO BE INTEGRATED IN COMPLETE PRODUCTION
LINES, WITH AUTOMATIC MANAGEMENT OF THE SIGNALS RECEIVED FROM
THE MACHINES AT THE ENTRY AND EXIT OF THE LINES**

Technical features

MS Models	50 L	70L/AL	90 L	90 AL	115 AL
Bar (mm)	500	700	900	900	1150
Max. Spool Width (mm)	480	680	880	880	1130
Max. package width (mm)	The width of the package is proportional to its height.				
Max. package height (mm)	250	380	380	380*	380*
Tunnel entrance dimensions (mm)	400X270h	600x400h	800x400h	800x400h*	1000x500h*
Tunnel chamber length (mm)	1100	1300	1500	1500	1900
Machine length (mm)	2500	3220	3600	3900	5360
Machine width (mm)	1150	1200	1500	1500	2100
Machine height (mm)	1400	1980			
Work Surface Height(mm)	Standard 850 +/-25*				
Machine weight (Kg)	650	940	1200	1250	1900
Electrical Power Supply	200Vx3-T / 400Vx3+N+T				
Electrical Power (Kw)	12	27	27	27	40
Electrical Consumption (Kw/h)	10	14	14	14	20
Pneumatic power supply (bar)	6				
Air consumption per cycle (NL)	6	10			
Max. production per minute	5-9	6-8 / 7-10	6-8	7-10	7-8

The features indicated may be subject to change

**Customizable on request*

Available models

- . With just inlet conveyor:
MS 50L / 70L / 90L (Up to 8 packages/min.)
- . With inlet and outlet conveyor:
MS 70AL / 90AL / 115AL (Up to 10 packages/min.)

MS MODELS REPRESENT THE MAXIMUM SIMPLIFICATION IN BUNDLING MACHINES

MADE WITH A MONOBLOCK STRUCTURE

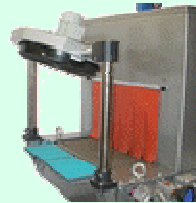
MS MODELS SHRINK SINGLE OR GROUPED ITEMS WITH POLYETHYLENE FILM IN AUTOMATIC OR SEMIAUTOMATIC WAY

Available options

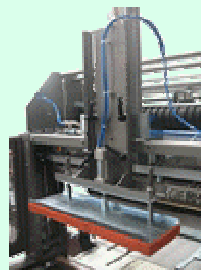
Product containment guides positioned after the welding bar



Bundle cooling unit installed at the outlet of the tunnel to reduce the cooling time of the package making it more compact for subsequent handling



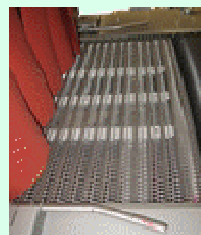
Pneumatic product pressing unit for unstable packages, with adjustable height, holds the package in position before the welding bar descends



Film presser roller unit installed at the tunnel outlet compacts the excess film that remains on the sides of the package when total closure of the package is required



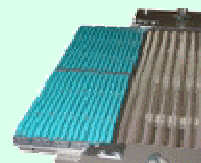
Product protection lateral guides positioned inside the tunnel.



Machine mounted on wheels so that it can be moved without the aid of lifting equipment



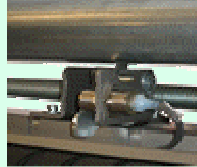
Roller conveyor with thick rollers positioned at the tunnel exit, under the package cooling unit. Especially useful for packaging groups of products using film only. These rollers facilitate the passage of the packages without causing any disintegration of them, resulting in a compact bundle once it is cooled.



Film spool insertion rollers - upper and lower - facilitate the operator in changing the spool.



Automatic end of spool system is a safety system that stops the film entering the rollers when the spool is finished, thereby avoiding possible damage and prolonged system downtime.



Automatic upper and lower film spool centring system by means of a hand wheel.

